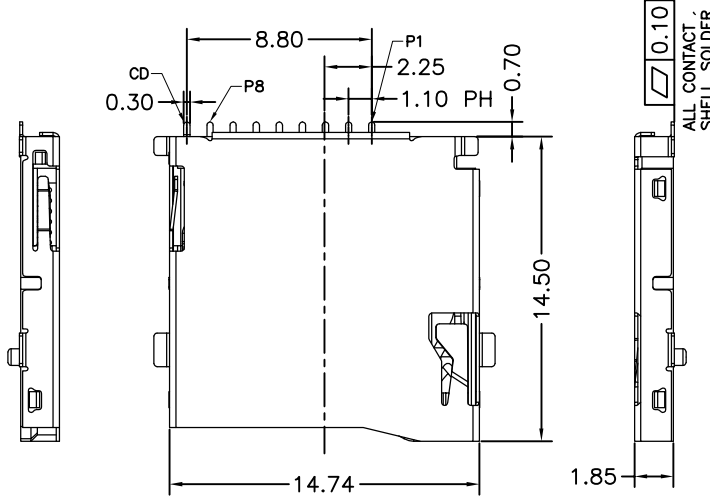
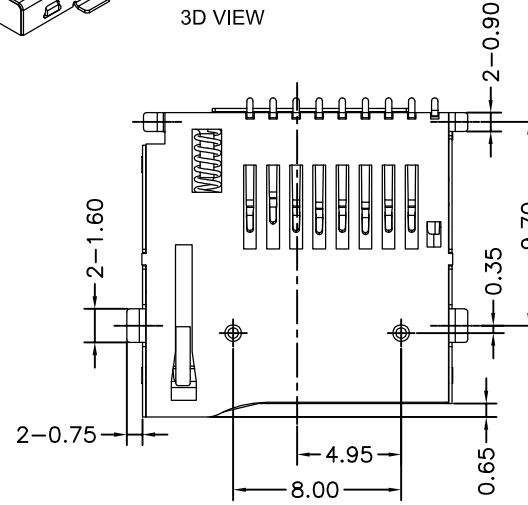
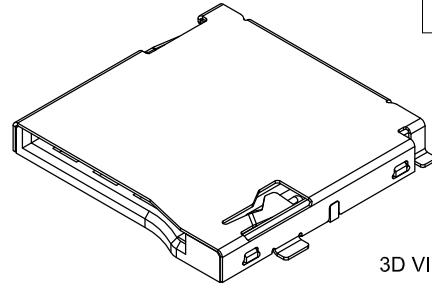
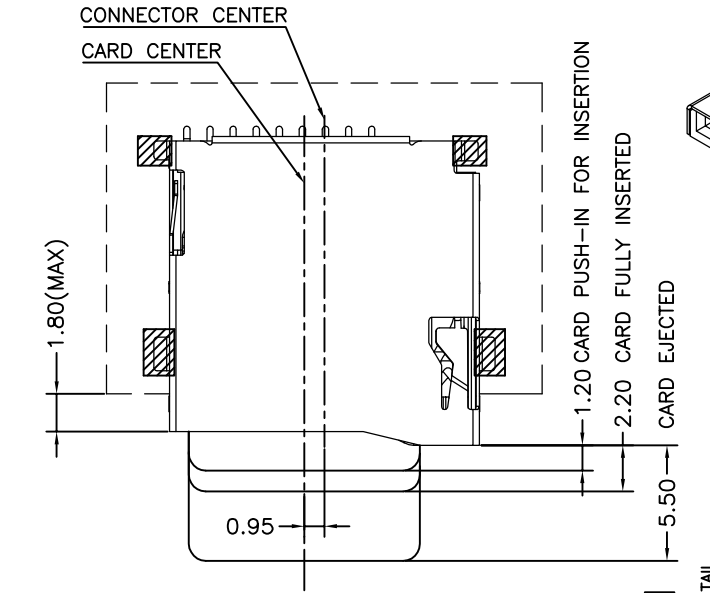


REV.	ECN NO.	LOCAS.	DESCRIPTION	DATE	DESIGN
A0			RELEASE TO CUSTOMER	150116	HANG
A1			增加定位柱公差	190306	YINC

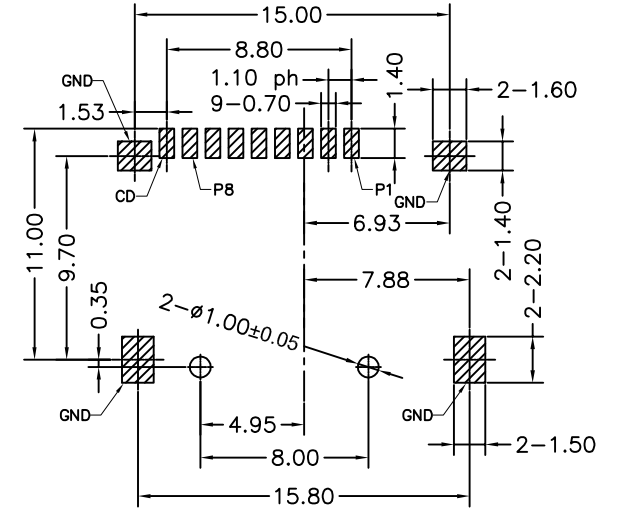
Pin No.	Pin assignment	Pin No.	Pin assignment
1	DAT2	5	CLK
2	CD/DAT3	6	VSS
3	CMD	7	DAT0
4	VDD	8	DAT1

CARD DETECTION SWITCH	
WHEN CARD IS EJECTED	WHEN CARD IS INSERTED
OPEN	CLOSE

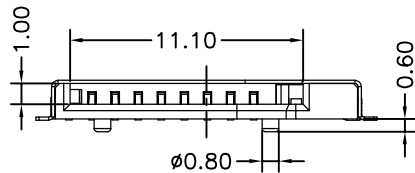


SPECIFICATION

- ELECTRICAL CHARACTERISTICS:**
 CONTACT CURRENT RATING:0.5 AMPERES.
 DIELECTRIC WITHSTANDING VOLTAGE:AC500VR.M.S.
 LLNSULATION RESISTANTE:1000MΩ MINIMUM.
 CONTACT RESISTANTE:100mΩ MAXIMUM.
- MECHANICAL CHARACTERISTICS:**
 MATING CYELES:5,000 INSERTIONS.
 INSERTION FORCE: 2.0KGF MAX.
 EXTRACTION FORCE: 0.4KGF MIN.
- ENVIRONMENTAL:**
 OPERATING TEMPERATURE:-20℃~+85℃.
- MATERIAL:**
 HOUSING:H1-TEMP PLASTIC LCP UL 94V-0 RATED
 CONTACT:COPPER ALLOY(T=0.15MM).
 SHELL:STAINLESS STEEL(T=0.15MM).



Recommended P.C.B Layout
 General Tolerance±0.05



LASTAR

Lastar Technology CO.,LTD

TEL:0755-27157971 FAX:0755-27157976 Http://www.lsdconn.com

DRAW NO.	070-014-09W0	DATE	DRAW NAME: TF卡座 PUSH 1.85H	
DESIGN	YINC	190306	P/N NO.	TF-070-014-09W0
CHECK	WANGCM	190306	FILE:	
APPROVED	HUYX	190306	UNIT: mm	SHEET: N/A
			MODEL:	10100009
			REV. A1	SCALE N/A

DIM	TOL	DIM	TOL
X.	±0.30	X'.	±4.0'
X.X	±0.25	X.X'	±3.0'
X.XX	±0.20	X.XX'	±2.0'
X.XXX	±0.10	X.XXX'	±1.0'

THIS DRAWING CONTAINS INFORMATION THAT IS PROVIDED BY LASTAR TECHNOLOGY AND SHOULD NOT BE USED WITHOUT WRITTEN PERMISSION