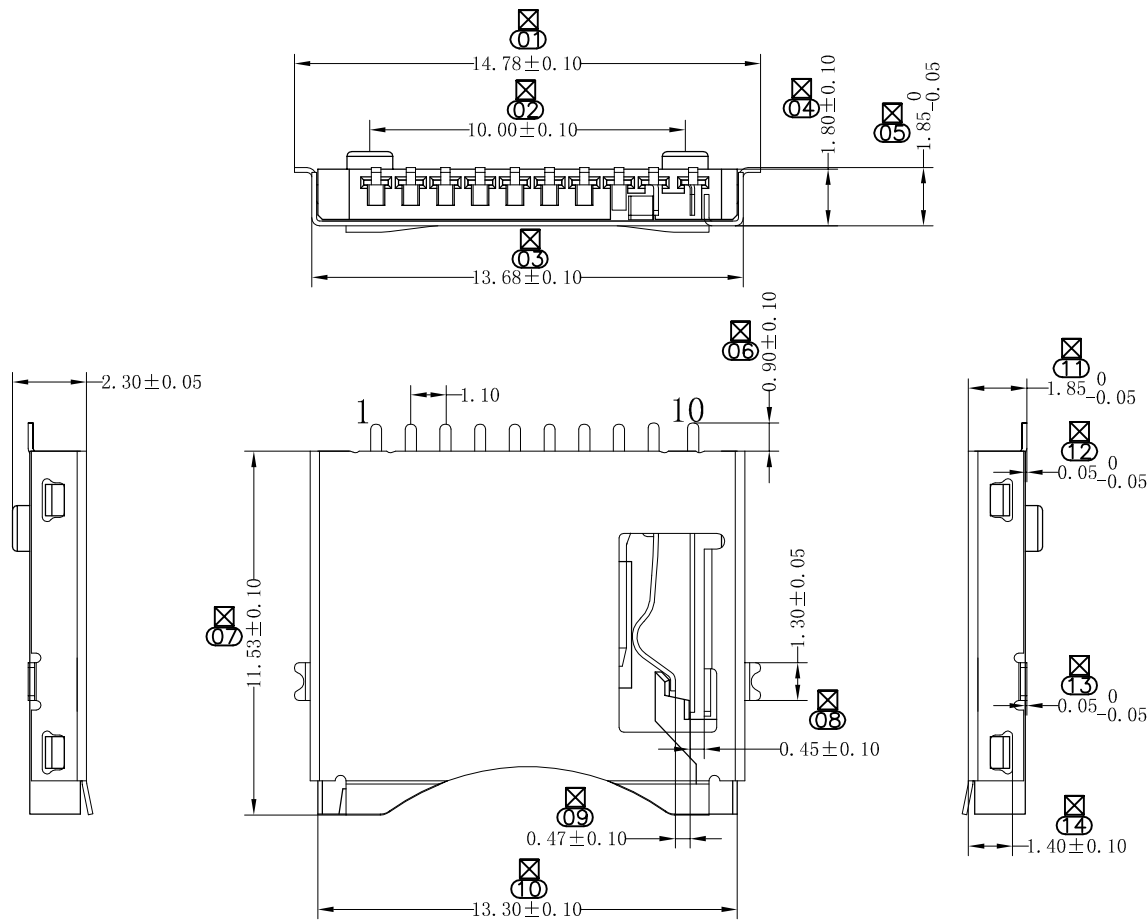


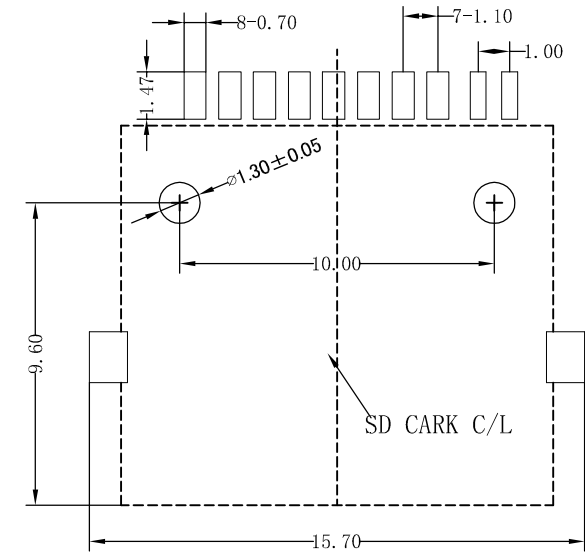
所有原料材质，生产制程，电镀必须符合RoHS要求

| REV. | ECN NO. | LOCAS. | DESCRIPTION | DATE | DESIGN |
|------|---------|--------|---------------------|--------|--------|
| A | | | RELEASE TO CUSTOMER | 150116 | YINC |



备注:

- 端子:A、外壳马口铁/C2680-H;
B、端子C5191-EH;
C、胶芯LCP黑色;
- 电镀:整个端子镀镍50~80u",在镀金区域镀金(刷镀)1u"Min,其余部份镀亮锡120u"Min
- 允许毛边最大为0.05mm;
- 外观不允许有压伤,脏污,模痕等不良现象;
- 有"☒"标志的尺寸为QIP检验尺寸;
- 有"⊗"标志的尺寸为FAI全检尺寸;



| Pin NO. | Pin Assigenment | Pin NO. | Pin Assigenment |
|---------|-----------------|---------|-----------------|
| 1 | DAT2 | 6 | VSS |
| 2 | CD/DAT3 | 7 | DAT0 |
| 3 | CMD | 8 | DAT1 |
| 4 | VDD | 9 | CD |
| 5 | CLK | 10 | GND |

| | | | |
|----------|-----------------|--------|--|
| DRAW NO. | 070-121-1001-C8 | DATE | |
| DESIGN | YINC | 150116 | |
| CHECK | ZHAOZZ | 150116 | |
| APPROVED | HUXW | 150116 | |

<http://www.lsdconn.com>

<http://www.asia-wt.com>

深圳朗思达 香港朗思达
东莞共营 前海共赢
connector & cable

| | |
|-------------------------------|---------------------|
| DRAW NAME: TF卡座 不自弹 带铁壳 10PIN | |
| P/N NO. TF-070-121-1001-C8 | SHORT CODE 10100085 |
| UNIT: mm | SHEET: N/A |
| REV. A | SCALE 1/1 |

| DIM | TOL | DIM | TOL |
|-------|-------|--------|-------|
| X. | ±0.30 | X". | ±4.0" |
| X.X | ±0.25 | X.X" | ±3.0" |
| X.XX | ±0.20 | X.XX" | ±2.0" |
| X.XXX | ±0.10 | X.XXX" | ±1.0" |

THIS DRAWING CONTAINS INFORMATION THAT IS PROVIDED BY LASTAR TECHNOLOGY AND SHOULD NOT BE USED WITHOUT WRITTEN PERMISSION