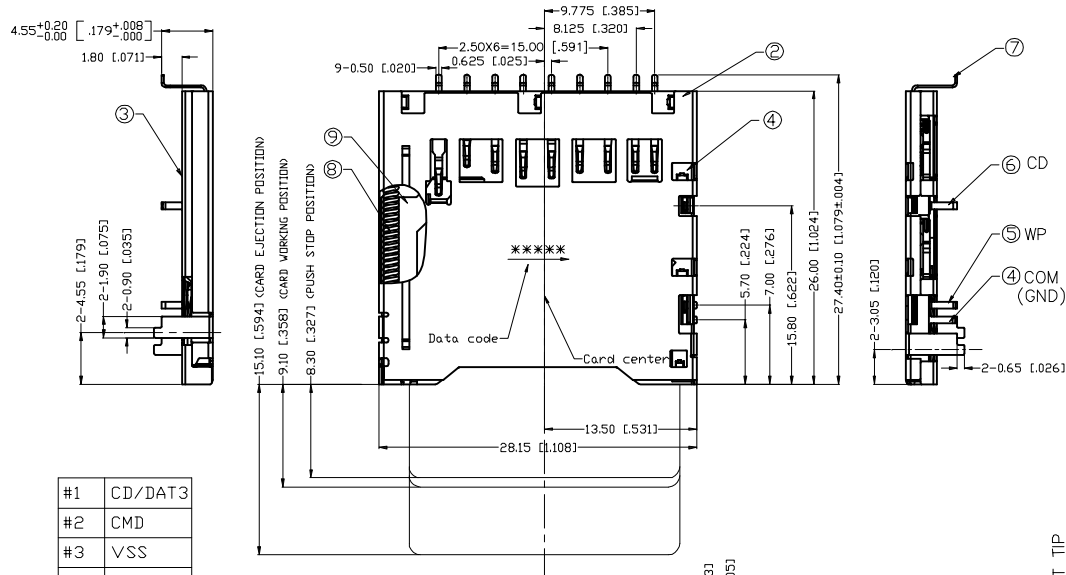


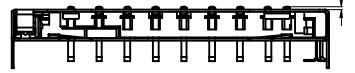
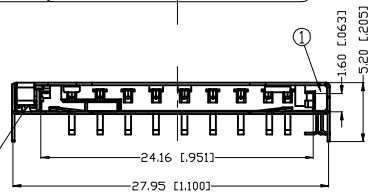
所有原料材质，生产制程，电镀必须符合RoHS要求

REV.	ECN NO.	LOCAS.	DESCRIPTION	DATE	DESIGN
A0			RELEASE TO CUSTOMER	150116	RYAN



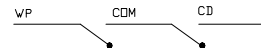
#1	CD/DAT3
#2	CMD
#3	VSS
#4	VDD
#5	CLK
#6	VSS
#7	DAT0
#8	DATE1
#9	DATE2

SD SIGNAL PIN DEFINE



THE HEIGHT OF SIGNAL CONTACT TIP EXCEED SHELL WHEN CARD INSERT

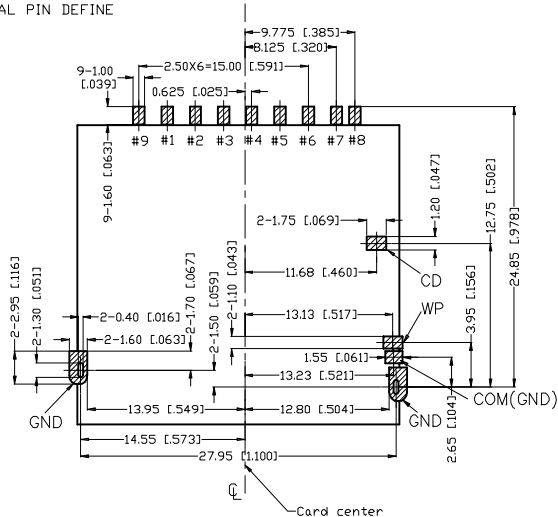
CARD INSERT



WP: WRITE PROTECT SWITCH CONTACT
COM: COMMON SWITCH CONTACT
CD: CARD DETECT SWITCH CONTACT

Switch Operation Diagram

ELECTRIC FUNCTION	WRITE PROTECT SWITCH				CARD DETECT SWITCH	
	WRITE UNABLE	WRITE ENABLE	WRITE UNABLE	WRITE ENABLE	MMC	SD
CARD NAME	MMC	SD	MMC	SD	MMC	SD
WITHOUT CARD	OPEN	OPEN	OPEN	OPEN	OPEN	OPEN
CARD INSERTED	OPEN	CLOSE	CLOSE	CLOSE	CLOSE	CLOSE
SWITCH DIAGRAM	WP	COM	COM	CD	COM	CD



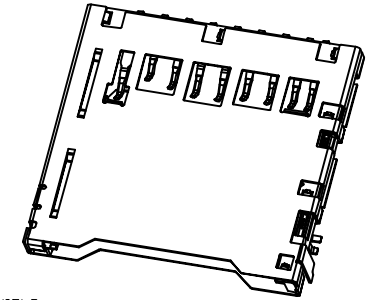
RECOMMENDED P.C.B. LAYOUT

PCB DIMENSION DEFAULT TOLERANCE:±0.05

1. [Symbol] : RECOMMENDED SOLDER PAD AREA

SPECIFICATION

- ELECTRICAL CHARACTERISTICS:**
 - CONTACT CURRENT RATING: 0.5A MAX.
 - CONTACT RESISTANCE: 100 mOHMS MAX.
 - OPERATING VOLTAGE: 3.3V.
TESTING VOLTAGE: 500V AC 1 MINUTE.
 - INSULATION RESISTANCE:
INITIAL:1000 MOHMS MIN.
AFTER TEST: 100 MOHMS MIN.
 - OPERATING CURRENT: 0.1A MAX
- MECHANICAL CHARACTERISTICS:**
 - TOTAL MATING FORCE: 40N MAX.
 - DURABILITY : 10000 CYCLES.
- ENVIRONMENT CHARACTERISTICS:**
 - OPERATING TEMPERATURE: -25°C~60°C
 - STORAGE TEMPERATURE: -40°C~85°C
- CARD OPERATION GUIDE:**
 - COMPATIBLE CARD: SD&MMC CARD
 - CARD INSERT DIRECTION:
THE CARD SIDE WITH ELECTRIC PAD SHOULD BE MATE TOP SHIELD
- RECOMMENDED IR REFLOW PORCESS PEAK TEMPERATURE:250±5°C,TIME 10s MAX .
- ALL SMT CONTACTS AND PADS CD-PLANARITY: 0.10mm MAX
- DON'T PERMIT TO BE PROCEEDED SMT RE-FLOW PROCESS WHEN PUSH-PUSH FEATURE IS IN WORKING POSITION



ITEM	DESCRIPTION	Q'TY	MATERIAL	FINISH	REMAR
10	CAM FOLLOWER	1	STAINLESS		
9	SLIDER	1	HI-TEMP UL 94V-0	COLOR: BLACK	
8	SPRING	1	STAINLESS		
7	SIGNAL CONTACT	9	COPPER ALLOY	NICKEL PLATING OVERALL LEAD FREE TIN ALDY PLATING AT TAIL AREA AU OR Pd/Ni+G/F PLATING AT CONTACT AREA	
6	DETECT SWITCH CONTACT	1	COPPER ALLOY		
5	WRITE PROTECT CONTACT	1	COPPER ALLOY	NICKEL PLATING OVERALL LEAD FREE TIN ALDY PLATING AT TAIL AREA G/F Au PLATING AT CONTACT AREA	
4	COMMON SWITCH CONTACT	1	COPPER ALLOY		
3	BOTTOM SHELL	1	STAINLESS	CLEAR	
2	TOP SHELL	1	STAINLESS	NICKEL PLATING OVERALL GOLD PLATING AT SOLDER PAD	
1	HOUSING	1	HI-TEMP UL 94V-0	COLOR: BLACK	

LASTAR

Lastar Technology CO., LTD

TEL:0755-27157971 FAX:0755-27157976 Http://www.lsdconn.com

DRAW NO.	050-080-0926	DATE	DRAW NAME: SD Card connector Stand Off 1.8mm		
DESIGN	RYAN	150116	P/N NO.	SD-050-080-0926	SHORT CODE
CHECK	WANGCM	150116	UNIT: mm	SHEET: N/A	MODEL Z6
APPROVED	HUYX	150116	REV. A0	SCALE	N/A

DIM	TOL	DIM	TOL
X.	±0.30	X'	±4.0°
X.X	±0.25	X.X'	±3.0°
X.XX	±0.20	X.XX'	±2.0°
X.XXX	±0.10	X.XXX'	±1.0°

THIS DRAWING CONTAINS INFORMATION THAT IS PROVIDED BY LASTAR TECHNOLOGY AND SHOULD NOT BE USED WITHOUT WRITTEN PERMISSION